

# Pedestrian Master Plans

Alta has offered comprehensive services for pedestrian projects, including walkway, sidewalk, intersection, and promenade planning and design for more than 15 years.

Improving pedestrian safety and comfort should be a goal for any forward-thinking community. Alta staff have worked on pedestrian plans for states, regions, large cities, and smaller cities and towns. We analyze current conditions, assess needed improvements, identify funding resources and strategies, design and engineer facilities, coordinate public and agency involvement, and see the project through on details such as connectivity, ADA compliance, landscaping and future expansion.

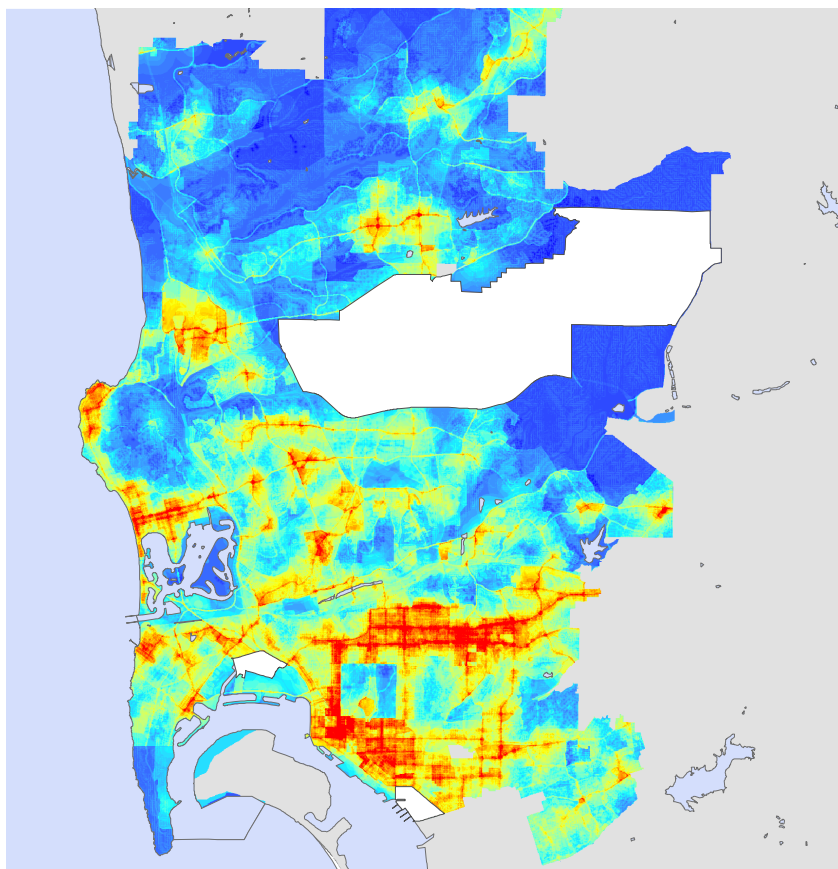
Specific elements include:

- GIS-based pedestrian demand / suitability models
- Comprehensive public outreach
- ADA accessibility
- Transit connectivity
- Safe Routes to School
- Design guidelines & development codes
- Project priorities & feasibility
- Main street plans
- Urban design and pedestrian safety improvements

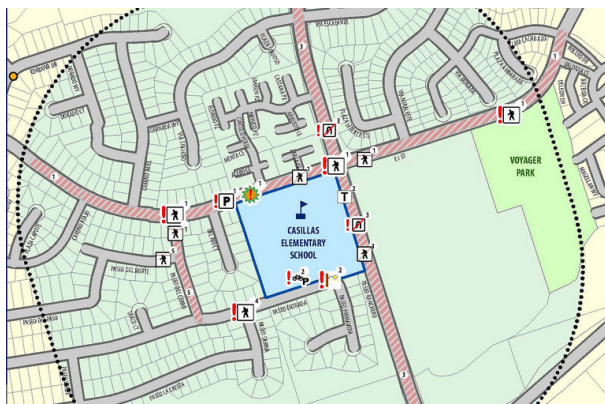
Alta's plans have helped public agencies identify needs, build community consensus and support, prioritize improvements, adopt new standards and codes, adopt financial plans, and implement a wide range of feasible projects.



Alta Planning + Design developed the bicycle and pedestrian master plan for Altamont, New York, a rural community northwest of Albany. The pedestrian plan included specific recommendations for the three state roads that run through the community and a connected network of sidewalks to link the outlying neighborhoods with the village center.



Alta uses GIS to perform spatial analyses and models, including this model depicting the pedestrian priority areas in San Diego.



Chula Vista, California's first pedestrian master plan was coordinated with the city's Safe Routes to School program.