

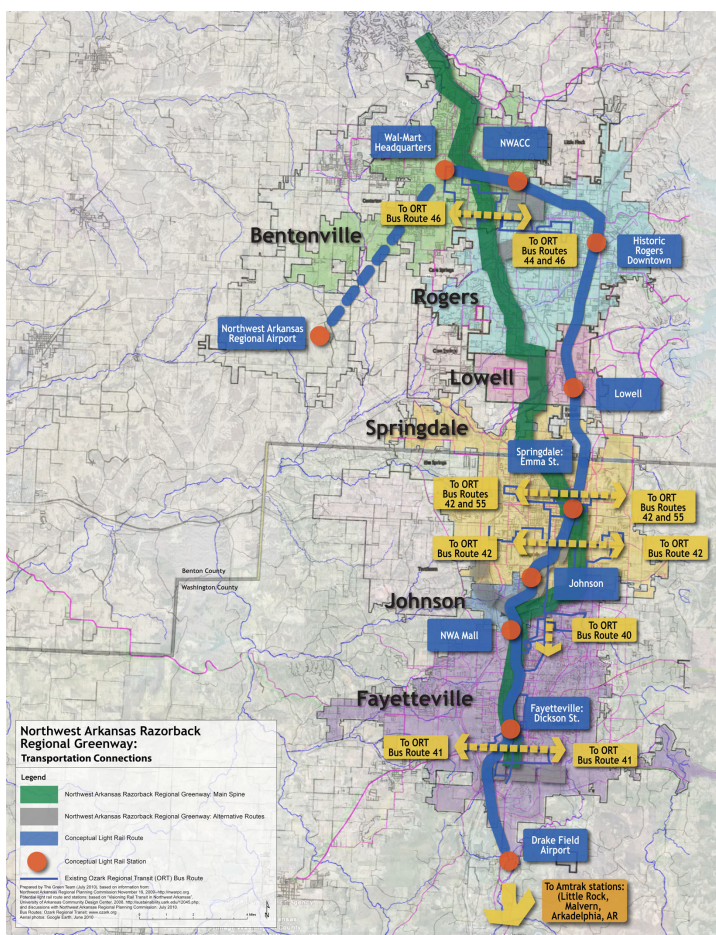
Trail and Greenway Master Plans

We strive to enrich the trail user experience through a design identity that responds to the particular needs and opportunities of the project environment.

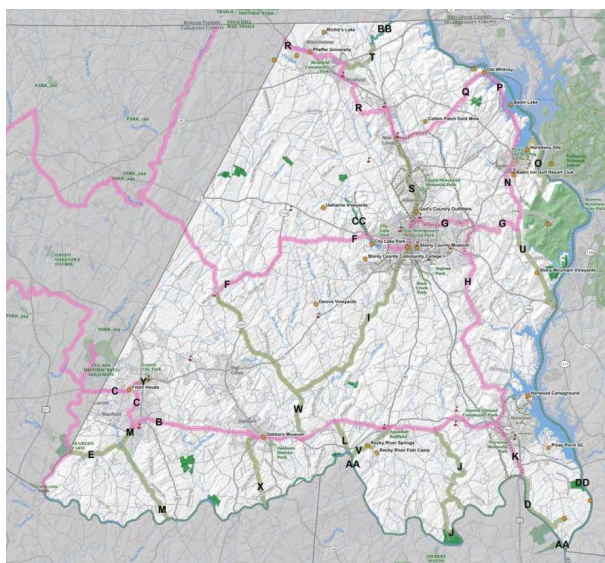
Alta Planning + Design provides complete trail master planning services, including design, alternatives analysis, environmental documentation, property acquisition strategies, accurate cost estimation, maintenance and management plans, and funding strategies. We excel in finding design solutions to the unique challenges found on trails and have planned, designed, and implemented more than 3,500 miles of bikeways, walkways, and trails.

Our multi-disciplinary staff has specialized expertise in land use laws, permitting, site analysis, usage projection, trail-roadway intersections, public involvement and a host of other key skills. We also provide mapping, signing, and construction management services.

We have experience in a wide range of environments including the development of greenways, rail corridors and rails-to-trails, street corridors, and multi-use hiking and seasonal-use trails in environmentally sensitive areas, urban core areas, parks, rural, and industrial areas.



Alta’s work on the Northwest Arkansas “Razorback Greenway” Trail System will create a regional network of bicycle and pedestrian facilities, connecting Northwest Arkansas citizens and visitors to heritage, recreational and cultural assets, and a healthier lifestyle.



Planning for the Carolina Thread Trail is completed on a county-by-county basis, and each county has the opportunity to determine the character and location of the trail in their communities.



The Katy Trail Arts Loop Study in Dallas, Texas created a pedestrian and bicycle trail linking the existing Katy Trail to the future Woodall Rodgers Park, the Arts District, and the Harwood redevelopment district.