

Bicycles & Streetcars/LRT

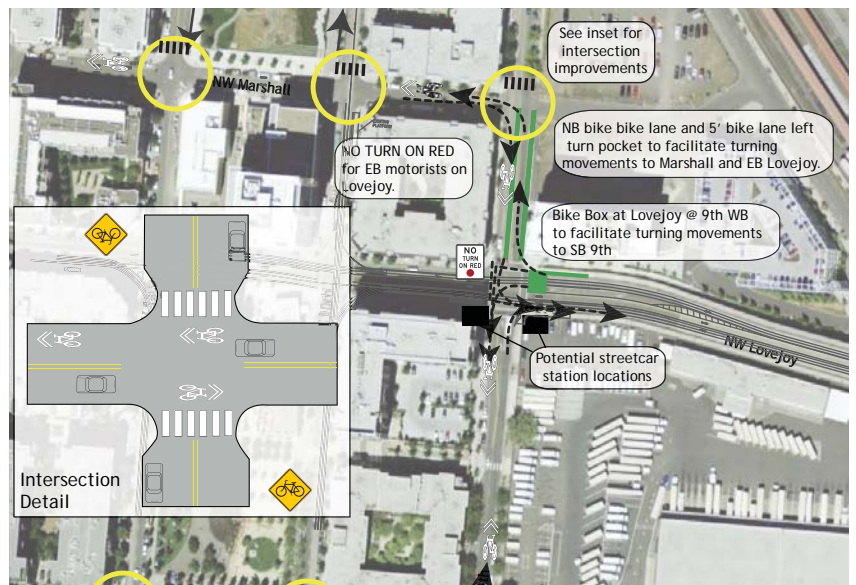
Modern streetcar systems stimulate bicycle- and pedestrian-friendly economic activity, are cost-effective, use limited urban space wisely, and are attractive, affordable, and popular.

Alta Planning + Design can help communities developing streetcar systems consider how they should interact with bicyclists and pedestrians. Building on our rail transit experience across the country, Alta has participated in alignment alternative studies, access and ridership analysis, environmental impact statements, preliminary design and final design for several streetcar projects, including Portland, Charlotte, and Seattle. Alta's services include:

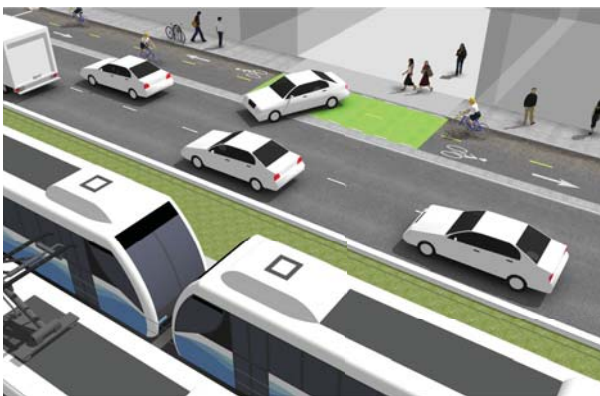
- Feasibility analysis for streetcar lines relative to bicyclists and pedestrians
- Impact analysis of streetcar lines on bicyclists and pedestrians
- Alternative alignment analysis, using matrices of technical analysis criteria
- Design guidelines and block-by-block design of streetcar track alignments, bike lanes, platforms, track-cyclist-pedestrian interaction, roadway intersections
- Design of separated or parallel bikeways, with connections
- Redline analysis of construction drawings
- Recommendations for helping bicyclists turn left or right across tracks



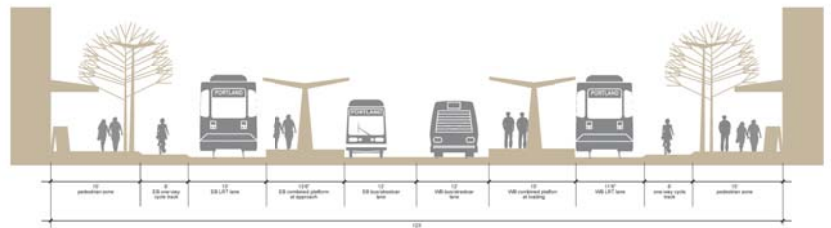
Alta developed conceptual bicycle treatments and mitigation strategies for each corridor of the proposed First Hill streetcar alignments in Seattle, Washington.



The primary issues Alta considers when assessing bicyclist-streetcar interaction are right-running tracks; flange gap and angle of crossing; and streetcar platforms (curb extensions) located in bicycle travelways, as shown here in Portland, Oregon.



Alta evaluated bicycle lane and cycle track options for design and construction of a new streetcar in Charlotte, North Carolina.



Working as sub-consultants to CH2M Hill, Alta led the Bicycle and Pedestrian Integration Study for the West segment of the Portland to Milwaukie MAX line in Oregon. The study included pedestrian and bicycle demand and routing options between the bridge, transit stations, greenway trail, and other destinations.